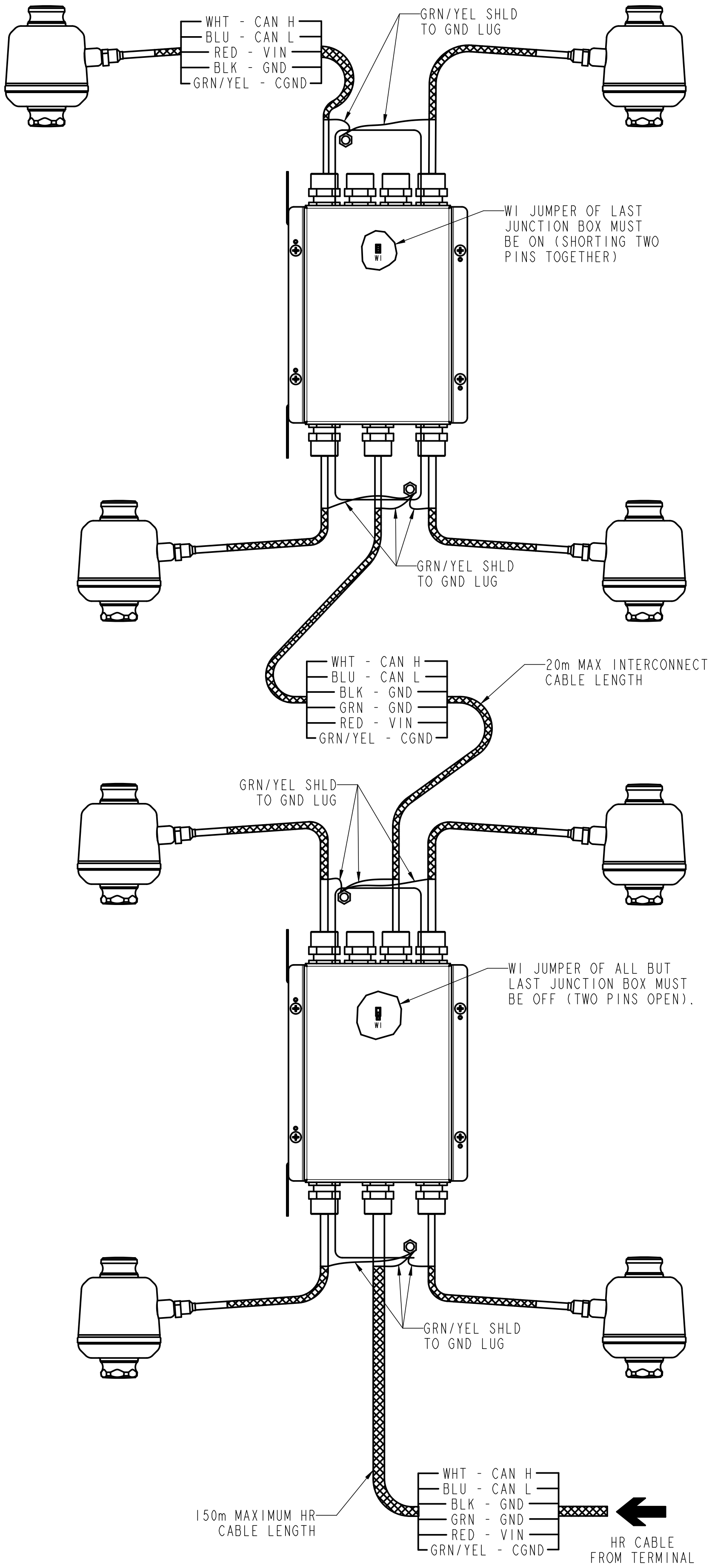
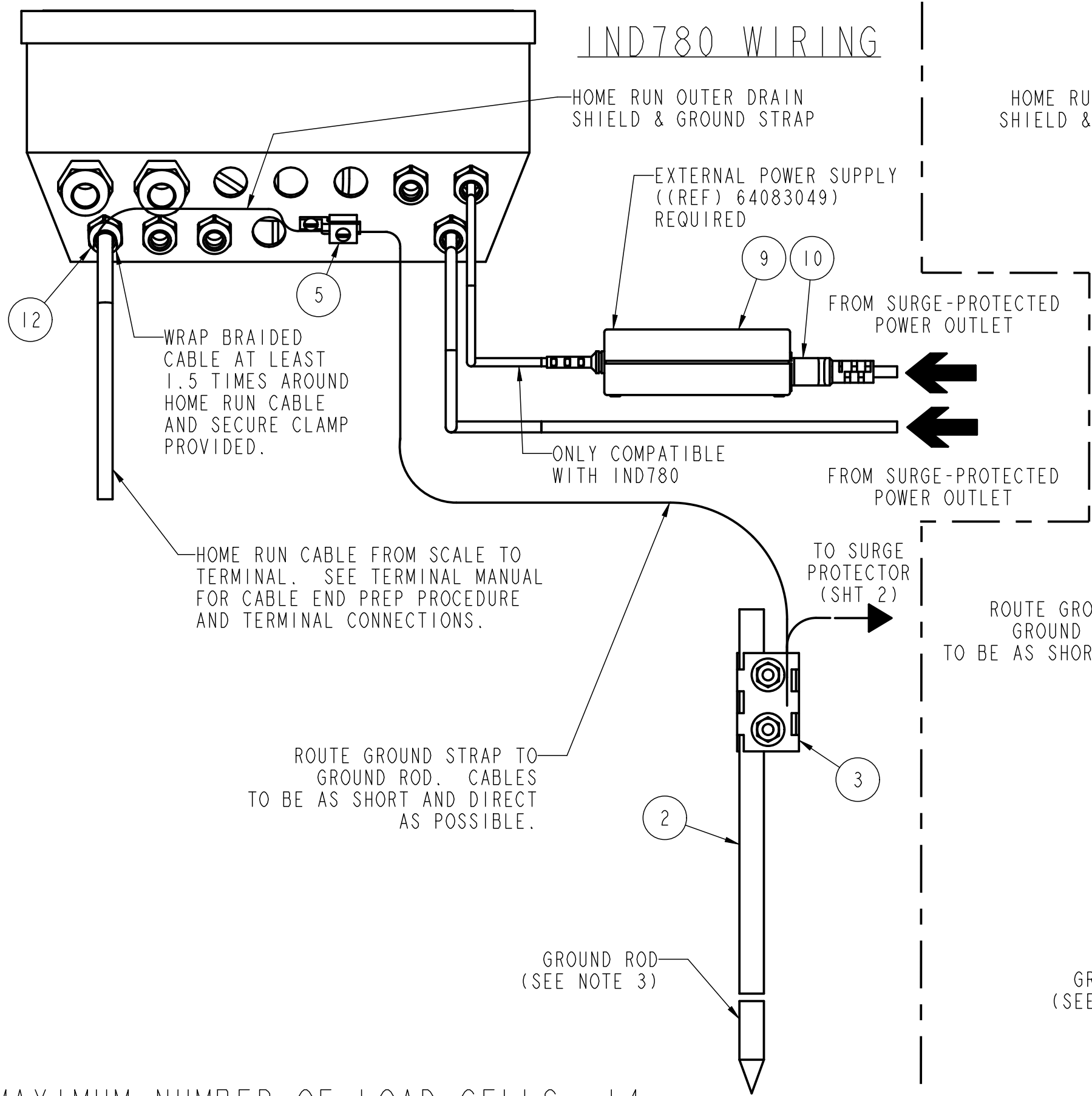


TYPICAL 8-CELL SYSTEM



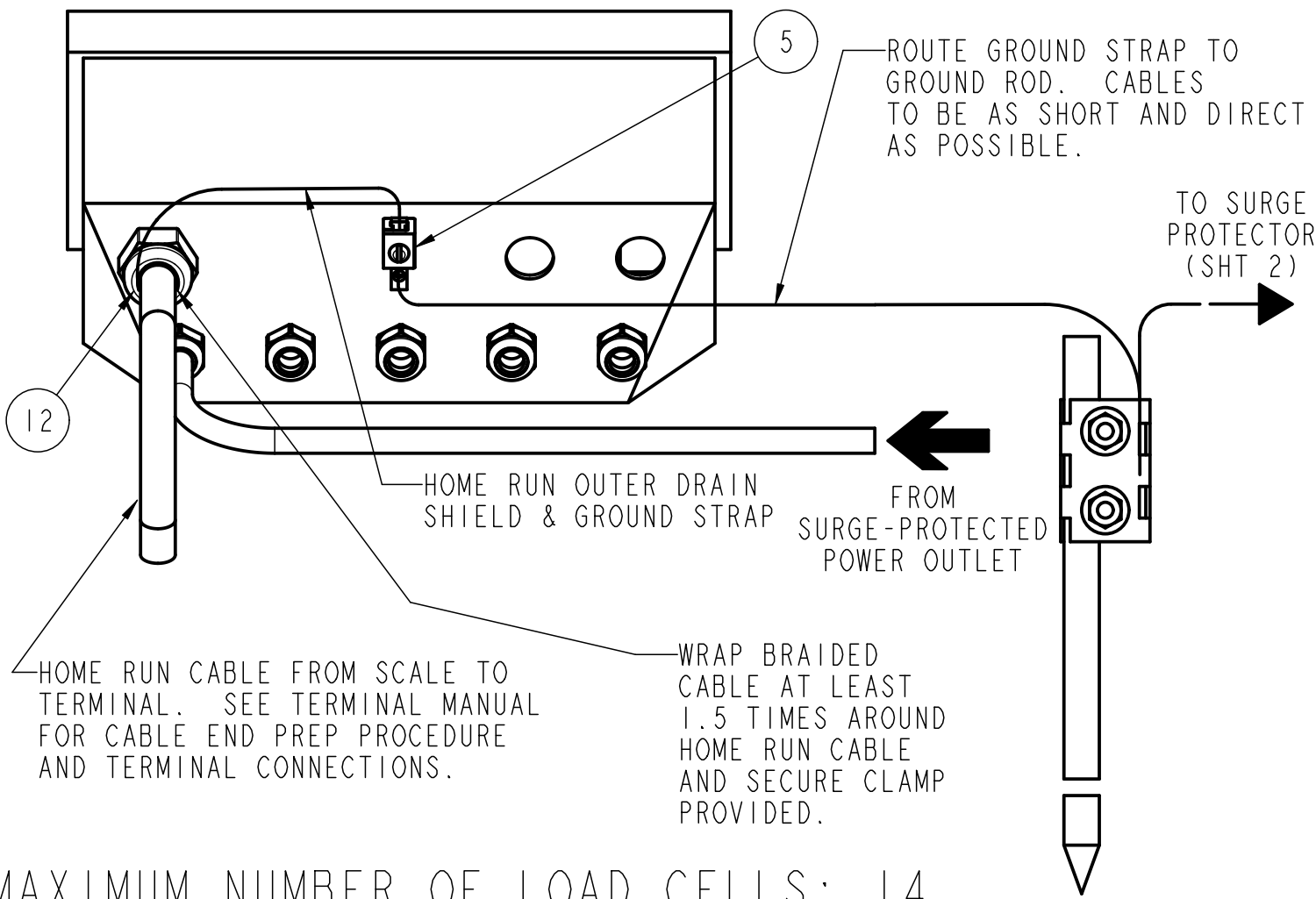
FOR DETAILED WIRING INFORMATION AND HOME RUN CABLE PREPARATION, PLEASE REFER TO YOUR TERMINAL'S TECHNICAL MANUAL.

IND780 WIRING



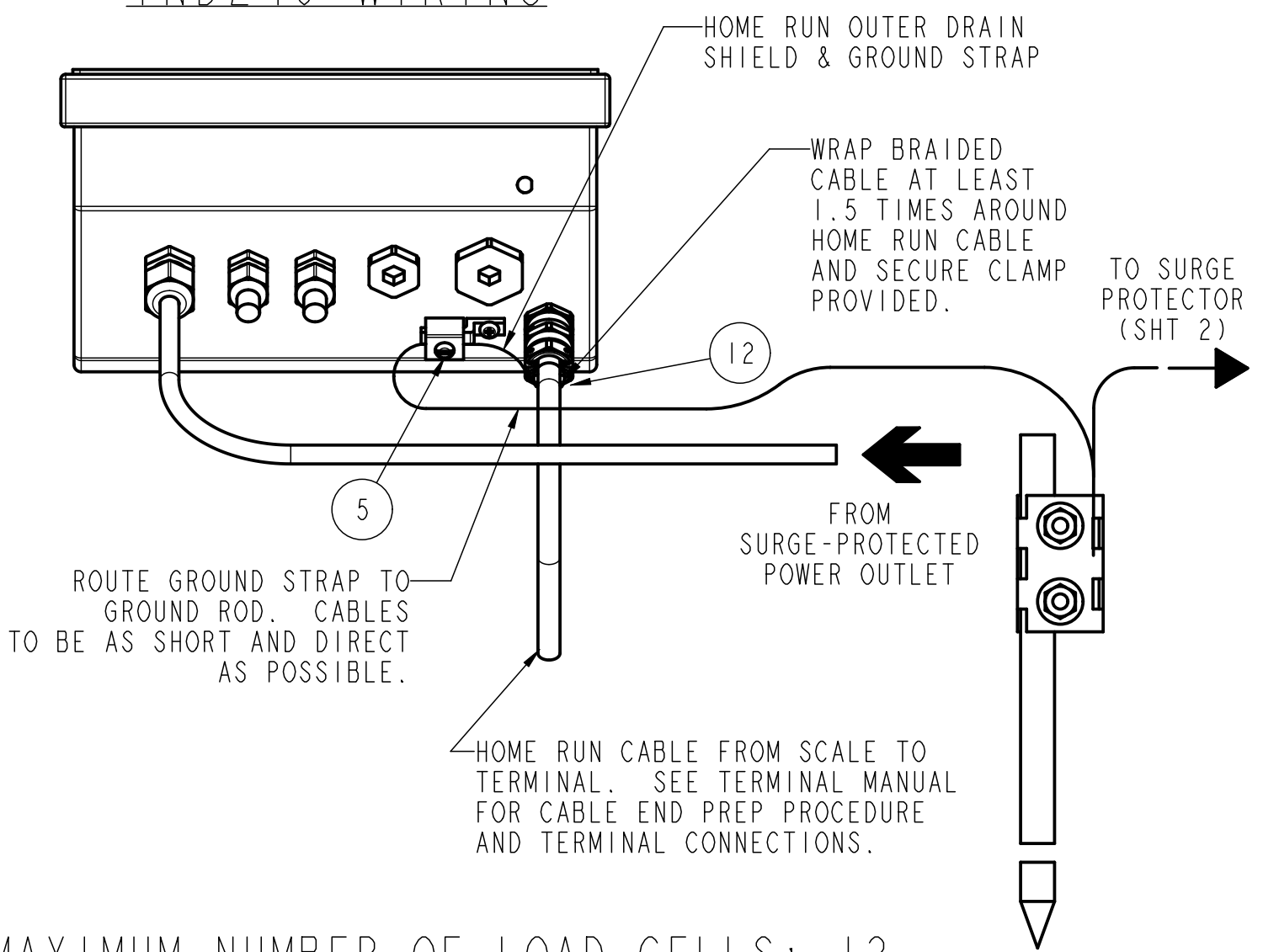
MAXIMUM NUMBER OF LOAD CELLS: 14

IND560 & IND570 WIRING



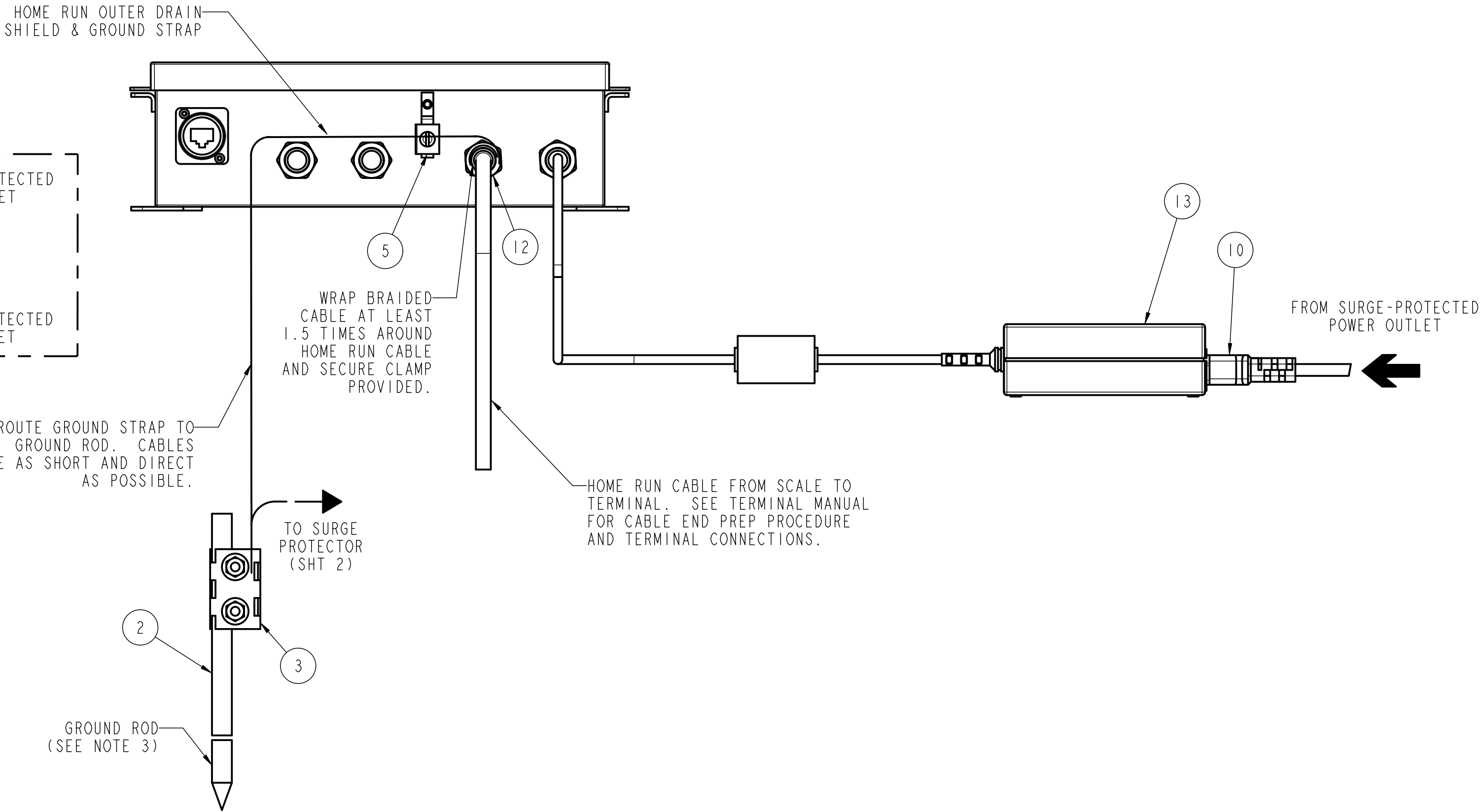
MAXIMUM NUMBER OF LOAD CELLS: 14

IND246 WIRING



MAXIMUM NUMBER OF LOAD CELLS: 12

ACM 780 WIRING



- NOTES:
1. HOME RUN CABLE TO BE PURCHASED FROM METTLER TOLEDO. CABLE TO BE RUN IN DEDICATED CONDUIT, PREFERABLY STEEL.
 2. AC POWER FOR THE TERMINAL AND ANY ACCESSORIES MUST COME FROM THE AC TRANSIENT SURGE VOLTAGE PROTECTOR.
 3. GROUND ROD TO BE DRIVEN A MINIMUM OF 8' VERTICAL INTO SOIL.

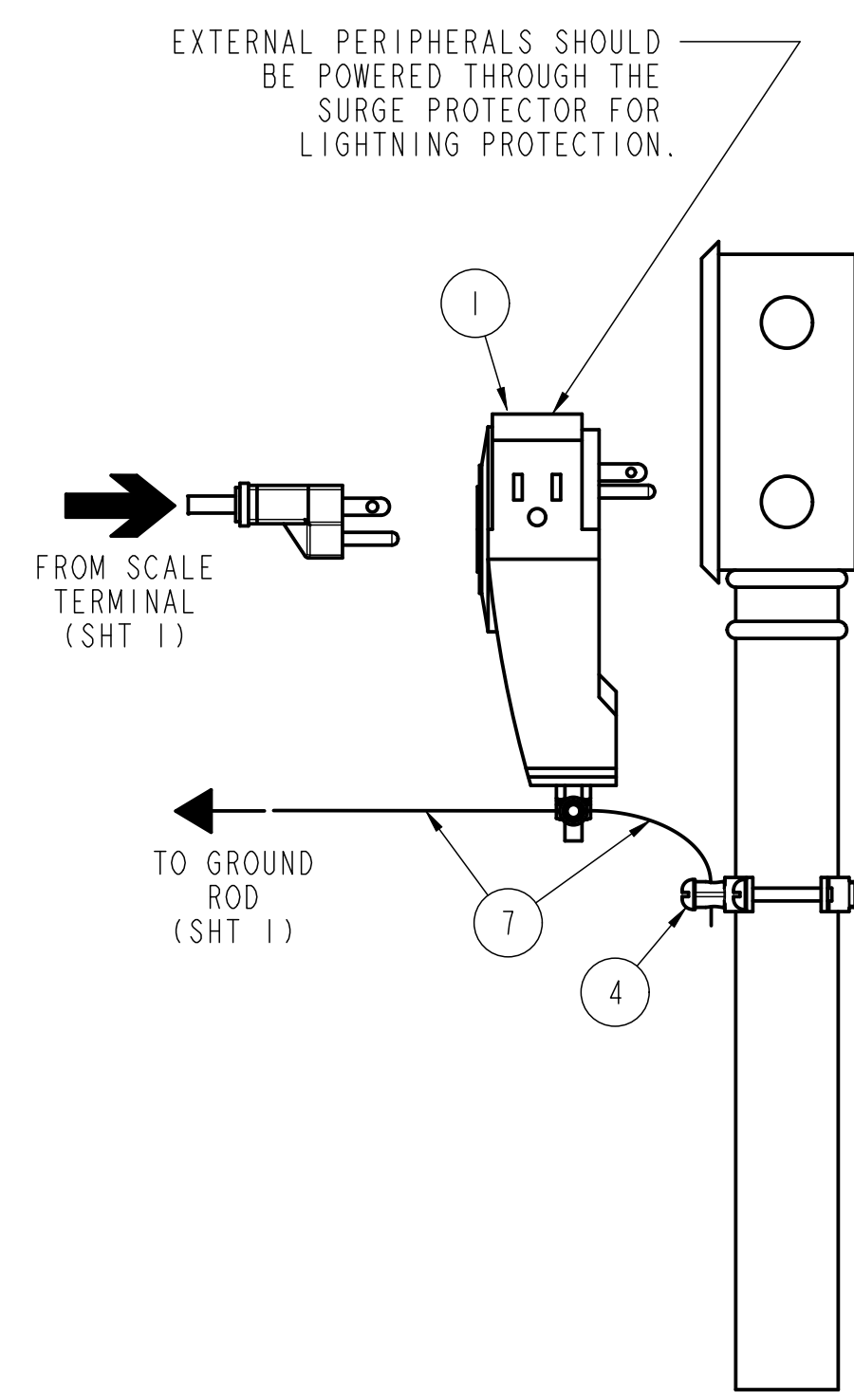
LPO KIT	APPLICATION
61043832	240V, IND780
61043833	240V, IND780, 61043832 WITHOUT GROUND ROD
61043830	240V, IND560 & IND246
61043831	240V, IND560 & IND246, 61043830 WITHOUT GROUND ROD
61043828	120V, IND780
61043829	120V, IND780, 61043828 WITHOUT GROUND ROD
61043826	120V, IND560 & IND246
61043827	120V, IND560 & IND246, 61043826 WITHOUT GROUND ROD

ITEM	61043833	61043832	61043831	61043830	61043829	61043828	61043827	61043826	PART NUMBER	DESCRIPTION
1	-	-	-	-	-	-	-	-	68004219	SURGE PROTECTOR, 120V
1	-	-	-	-	-	-	-	-	61045754	SURGE PROTECTOR, 230V
2	-	-	-	-	-	-	-	-	69031747	GROUND ROD, 10"
3	-	-	-	-	-	-	-	-	61038442	GROUND ROD CLAMP
4	-	-	-	-	-	-	-	-	61070011	CONDUIT GROUNDING CLAMP
5	-	-	-	-	-	-	-	-	68002800	GROUND LUG
6	-	-	-	-	-	-	-	-	61072621	RING TERMINAL, 14-16 GA
7	50'	50'	50'	50'	50'	50'	50'	50'	69033707	1/2 FLAT BRAIDED CABLE
8	-	-	-	-	-	-	-	-	68004106	MULTIPLE OUTLET STRIP 120V (NOT SHOWN)
9	-	-	-	-	-	-	-	-	64083049	EXTERNAL POWER SUPPLY
10	-	-	-	-	-	-	-	-	68002184	POWER CORD, IEC320-NORTH AMERICA
11	-	-	-	-	-	-	-	-	68002917	CORD GRIP
12	-	-	-	-	-	-	-	-	30092799	CLAMP BAND HOSE #4 SS
13	-	-	-	-	-	-	-	-	30429299	EXTERNAL POWER SUPPLY (ACM 780)

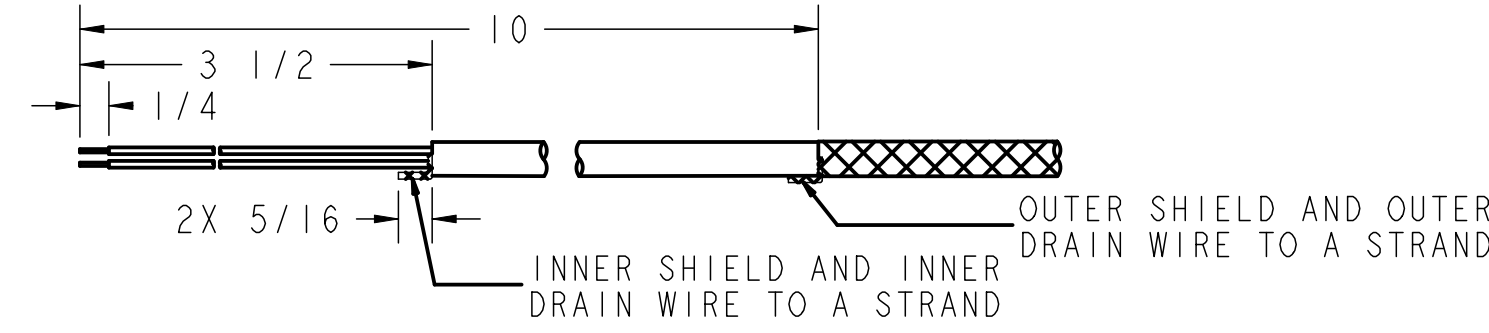
** SUPPLIED AS STANDARD, OTHER INTERNATIONAL CORDS MUST BE ORDERED SEPARATELY.

REV	CHANGE	BY	DATE	SCALE	NONE
A	REMOVED WIRING KIT TABLE, UPDATED IC MAX LENGTH	ADF	06/16/16	DATE	11/02/15
B	ADDED ACM780 AND MOVED VIEWS TO SHEET 2	NLD	10/27/17	DRN	CAK APPD EVW
TITLE					POWERCELL GDD LIGHTNING PROTECTION (LPO)
					SHEET 1 OF 2
					UNLESS OTHERWISE SPECIFIED, ALL DIMENSIONS ARE IN INCHES, AND DIMENSIONAL TOLERANCES ARE: FRACTIONAL DECIMAL ANGULAR ±.1 ±.01 ±.02 ±.05
					THIS PRINT IS FURNISHED WITH THE UNDERSTANDING THAT THE ESSENCE THEREOF WILL NOT BE REPRODUCED IN WHOLE OR IN PART WITHOUT WRITTEN AUTHORIZATION OF METTLER-TOLEDO, LLC. ALL DESIGNS ARE THE PROPERTY OF METTLER-TOLEDO, LLC. AND WILL BE PROTECTED BY PATENTS.
					61808234
					REV B

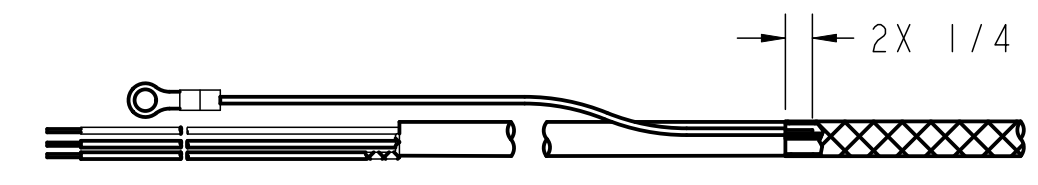
110/120 VAC SERVICE
60Hz, 1 PHASE



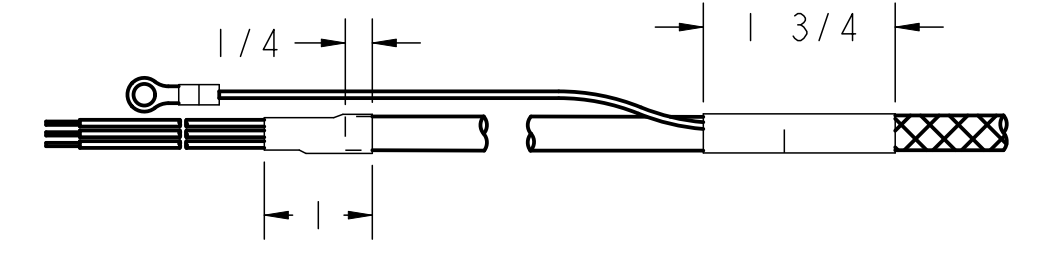
TERMINATION TO J-BOX END PREP



1. CUT CABLE TO LENGTH. TRIM OUTER SHIELD AND OUTER DRAIN WIRE TO LENGTH. TWIST OUTER SHIELD AND OUTER DRAIN WIRE TO SINGLE STRAND. REMOVE JACKET, INNER SHIELD, ALUMINUM FOIL, AND SEPARATOR. TRIM INNER SHIELD AND INNER DRAIN WIRE TO LENGTH. TWIST INNER SHIELD AND INNER DRAIN WIRE TO SINGLE STRAND. STRIP CONDUCTOR ENDS.

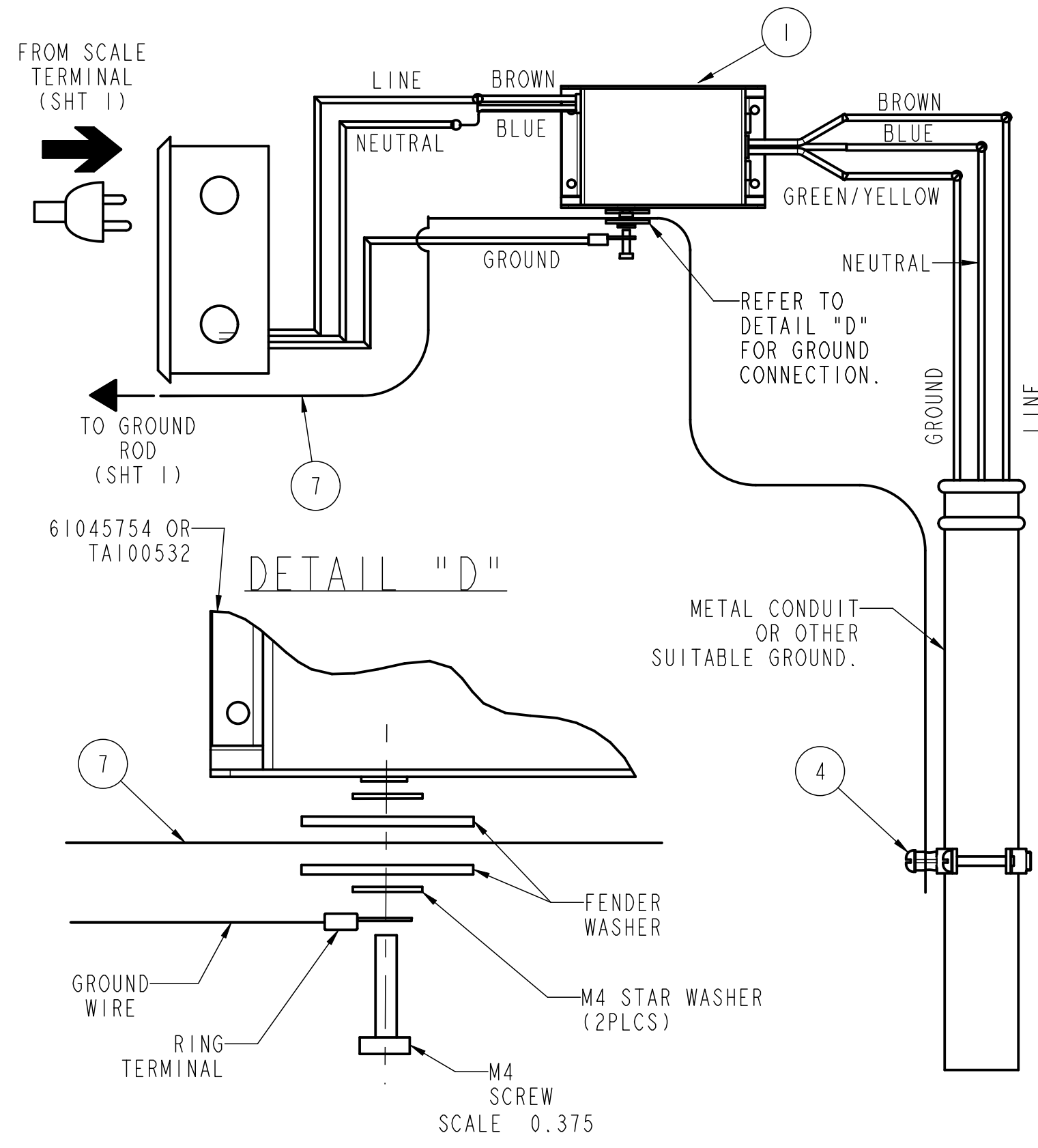


2. CRIMP RING TERMINAL TO 11" GRN/YEL 16GA WIRE. SOLDER GRN/YEL 16GA WIRE TO OUTER SHIELD AND OUTER DRAIN WIRE. SOLDER 3.5" GRN/YEL 16GA WIRE TO INNER SHIELD AND INNER DRAIN WIRE.



3. APPLY HEAT SHRINK IN 2 PLACES AS SHOWN.

220/240 VAC SERVICE
50/60Hz, 1 PHASE



REV	CHANGE	BY	DATE	SCALE	NONE	
A	REMOVED WIRING KIT TABLE, UPDATED IC MAX LENGTH	ADF	06/16/16	DATE	11/02/15	
B	ADD ACM780 AND MOVED VIEWS TO SHEET 2	NLD	10/27/17	DRN	CAK	APPD EVW
TITLE POWERCELL GDD LIGHTNING PROTECTION (LPO)						
SHEET 2 OF 2						
UNLESS OTHERWISE SPECIFIED, ALL DIMENSIONS ARE IN INCHES, AND DIMENSIONAL TOLERANCES ARE:						THIS PRINT IS FURNISHED WITH THE UNDERSTANDING THAT THE ESSENCE THEREOF WILL NOT BE REPRODUCED IN WHOLE OR IN PART WITHOUT WRITTEN AUTHORIZATION OF METTLER-TOLEDO, LLC. ALL DESIGNS ARE THE PROPERTY OF METTLER-TOLEDO, LLC AND WILL BE PROTECTED BY PATENTS.
FRACTIONAL DECIMAL ANGULAR						
±1/16 .XX ±.02 .X ±.5°						
.XXX ±.005						
61808234						REV B